



HOA breeding farm for bull ants manual



Our *HOA breeding farm* for semi-claustral ants (e.g., bull ants) is designed for keeping young queens to start a new colony.

It is essentially a breeding tube connected to an arena box. The breeding tube has foam tubing (for temperature and light protection) which is smooth and easily removable to be able to check the young queen easily. It has a water reservoir for drinking and to maintain the right humidity. In combination with the foam tubing, the water reservoir additionally acts as a form of temperature storage. The arena box has a snug fitting lid (no cat, toddler or drop will accidentally open it) with a large hole for ventilation. The hole is capped by a stainless-steel mesh that is welded in (not the prettiest solution but very rugged). No ant will ever nibble through it! A sand-clay mixture is included for the breeding tube, cotton wool to build the water reservoir and a small honey dish.

tip:

- Feed your (semi-claustral) queen twice a week with fresh honey and a fresh insect. The water in the tube should suffice for several months. Nevertheless, check the water regular. If it starts to become slimy, milky, or yellow, change it immediately.
- Do not put a single ant queen in a large ant farm, because:
 - a) She won't like it.
 - b) She might not be fertilized. So, before you even buy an expensive ant farm, give her the time to prove that she can start a colony.



information:

- For claustral ants (e.g., sugar ants), a closed ventilated tube with a water reservoir and darkness will likely suffice to start a colony. Semi-claustral ants (e.g., bull ants) don't have the reserves to start a colony without eating in between. So, they need to leave the nest from time to time. This is the reason why bull ants need special breeding facilities such as our breeding farm.

material list:

- Breeding tube with aluminium lid (with hole)
- Smooth-running foam tubing
- Arena box
- Lid with a big hole for ventilation (capped with stainless steel mesh)
- Sand-clay mixture
- 2x cotton wool pieces
- Honey feeding dish

dimensions:

- w = 30 cm
- h = 6 cm
- d = 10,5 cm

setup:

1. Fill the tube to the top with clean water.



2. Squash one cotton wool piece to a ball and push it into the tube.





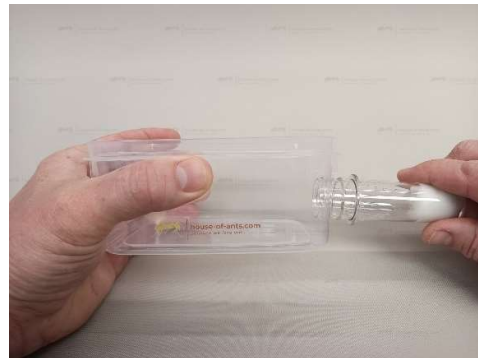
3. Push the cotton wool ball with your finger or a slim stick down to the middle of the tube.



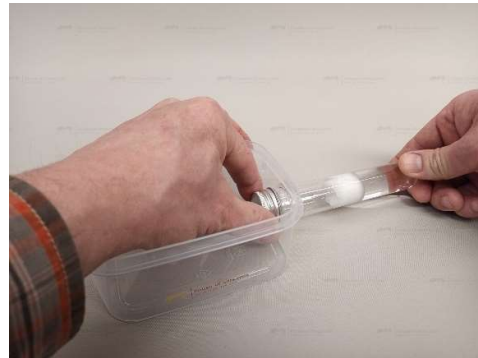
4. Tip out the excess water in the front part of the tube. It is now ready for use.



5. Attach the tube onto the arena box by screwing it into the hole.



6. Screw the lid onto the tube by holding the hole of the lid downward and turning the tube.





7. The lid hole should be at the bottom.
Mark the top of the tube.



8. Screw of the lid by turning it. Keep the tube in position.



9. Tip some sand-clay mixture (½ teaspoon approx.) into the tube. Ensure that the marked side stays up.

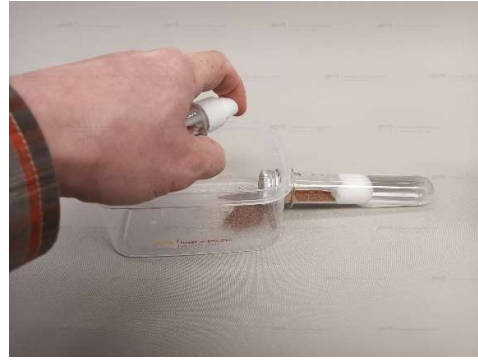


10. Carefully screw the lid on without turning the tube.

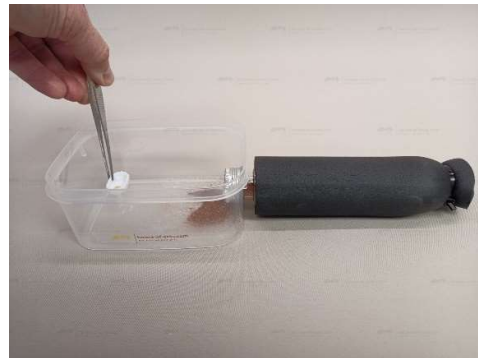




11. Create a little ramp out of the sand-clay mixture in front of the tube entry. This ensures that the queen will find her way in and out. Spray some water onto the ramp to secure it.



12. Put the foam tubing on and place the honey dish, containing just a drop of honey.



13. Carefully place your ant queen into the breeding farm and close the lid (without hurting the queen).
Tip: Take your time for this, as you don't want to hurt the queen. If she escapes before you have closed the lid, just catch her carefully and gently put her back. This shouldn't stress her more than collecting her or handling the tube.



How do ants accept our breeding farms?

After one night:

